

## BLEEDING PROCEDURE FOR CT1420

### FILLING



**1.** Switch the interior heater blower off.



**2.** Fill the coolant expansion tank coolant level to the top of the neck.



**3.** Install the coolant expansion tank cap.

### BLEEDING

**START**



**1.** Start the engine.

**START**



**8.** Start the engine.



**2.** Raise the engine speed to 2000 revolutions per minute (RPM) and maintain it for 3 minutes.



**9.** Raise the engine speed to 2000 RPM.



**3.** Monitor the coolant level for approximately 3 minutes.



**10.** Maintain the engine speed at 2000 RPM for approximately 13 minutes until the engine has reached normal operating temperature.



**4.** Switch the engine off.



**11.** Increase the engine speed to 3000 RPM and maintain it for 5 seconds.



**5.** Check the coolant level.



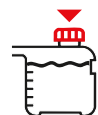
**12.** Decrease the engine speed to 2000 RPM and maintain it for 15 minutes.



**6.** Fill the coolant expansion tank coolant level to the neck of the tank if necessary.



**13.** Switch the engine off.



**7.** Install the coolant expansion tank cap.



**14.** Check the cooling system for leaks.